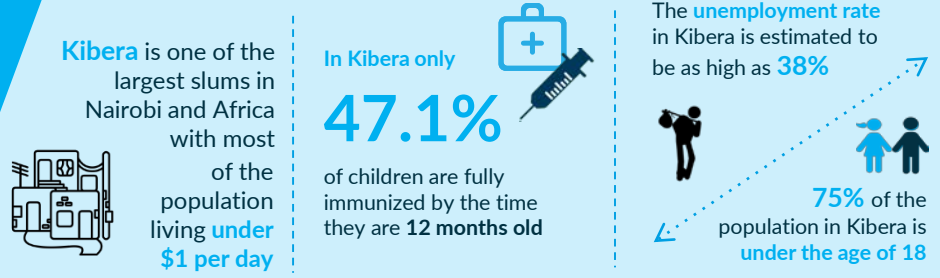


CHALLENGES



AT A GLANCE

Kibera is both the largest slum in Nairobi and in Africa. Most of Kibera’s residents live in extreme poverty, at under \$1 per day. Carolina for Kibera (CFK) is a holistic community based organization that works to develop local leaders, catalyze social and economic progress, promote peace, and alleviate poverty. CFK’s programs are aligned under three main departments: Social Services, Health, and Economic & Entrepreneurial Development. To date, CFK has supported approximately 43,000 people.

KEY PROGRAMS

Primary Healthcare Department

CFK’s Primary Healthcare Department consists of the Tabitha Clinic, the Community Health Outreach Program (CHOP), Nutrition Center, and Sexual & Reproductive Health Program (SRHP). The Tabitha Clinic provides comprehensive primary care as well as specialized care for illnesses that often affect the communities in Kibera. The Community Health Outreach Program with the help of Community Health Volunteers (CHVs) plays a critical role in bridging the gaps in healthcare and providing health education, preventative care, and access to healthcare. The Nutrition Project offers community-based screening for malnutrition and provides direct access to treatment for acute malnutrition in children under 5, as well as referral services for deworming and micronutrient supplementation. The SRH Program seeks to increase access to information about healthy behaviors and contraceptives, as well as encourage HIV counseling and testing and cervical cancer screening.

Youth Empowerment Department

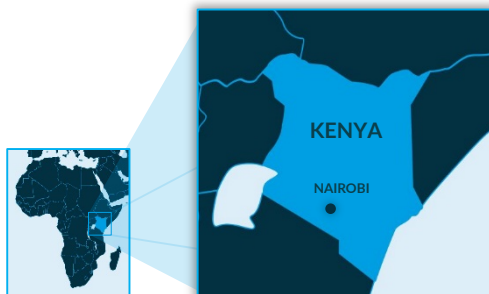
CFK’s Youth Empowerment Department hosts its flagship Sports for Development Program and Entrepreneurship & Education Programs. CFK’s Sports for Development Program engages youth through soccer and jump rope to promote a healthy lifestyle and create a peaceful community. CFK’s Education Program (Angaza) provides scholarships to students in high school to cover 100% of their tuition fees, books, and

uniforms for all four years of high school. The program targets orphans and vulnerable children in Kibera who demonstrate academic and leadership potential but may not otherwise have family or safety nets to support their education. The Entrepreneurship Programs aims to provide the necessary skills and tools for underprivileged youth to gain meaningful employment with partner local businesses and employers. Services offered under this program include vocational training, ICT training, networking and mentorship opportunities, work readiness and financial literacy skills. CFK is also an active Kiva trustee and is in the process of developing a formal agreement to become an official Kiva field partner. Cumulatively, CFK has disbursed \$20,575 to 98 borrowers with a 94% repayment rate. These micro loans offer a critical source of seed capital to aspiring young entrepreneurs in Kibera.

Girls’ Empowerment Department

CFK’s Girls’ Empowerment Department consists of the Binti Pamoja Program (Daughter’s United) and Economic Empowerment Programs specifically tailored for young adolescent girls. The Binti Pamoja Program helps girls discover their leadership potential and allows them to create their own safe spaces in the community. The program utilizes arts and performance activities such as photography, drama, and dance, as way to express themselves while at the same time learning about important issues such as sexual and reproductive health, girls’ rights, and economic empowerment.

KEY FACTS



● Areas of operations supported by Epic

AGE RANGE	0-26+
BENEFICIARIES	3,700
SECTORS	EDUCATION, ECONOMIC EMPOWERMENT & HEALTH
STAFF	73
BUDGET	\$ 924,761 (2017-18) \$ 1.8 m (2018-19)
YEAR ESTABLISHED	2002

(2018 data estimates)